

DESIGN CONTROL LINE TOOLERN WATERS DRIVE

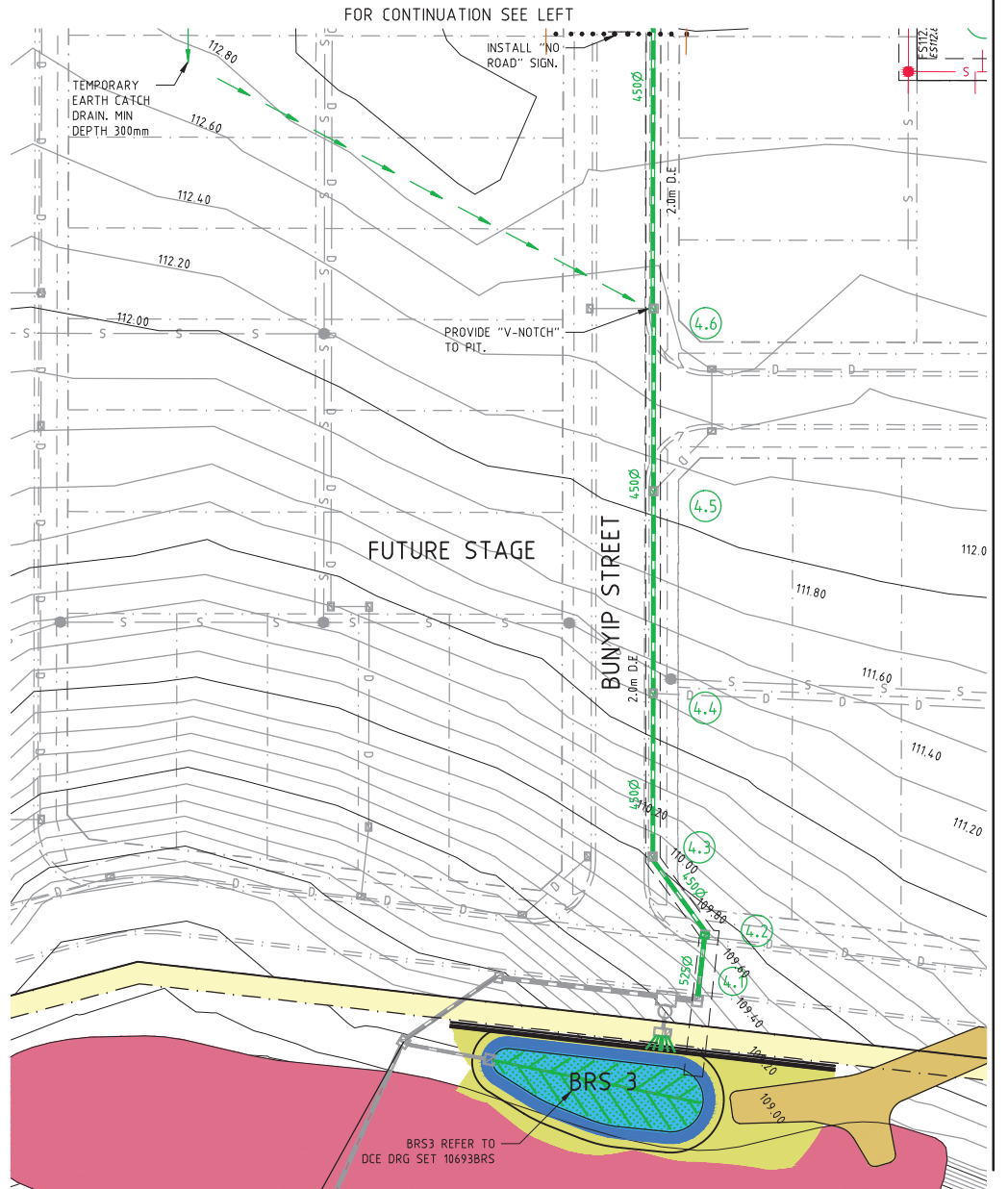
CHAINAGE	EASTING	NORTHING	BEARING	RADIUS
START	0.000	285099.003	5822609.635	277 6 30.0
H.I.P	4.000	285095.034	5822610.130	277 6 30.0
H.I.P	66.000	285033.510	5822617.802	277 6 30.0
T.P	69.000	285030.533	5822618.173	277 6 30.0
CENTRE		284970.507	5822334.420	-487.500
T.P	155.007	284944.693	5822621.252	267 0 0.0
T.P	183.665	284916.074	5822619.752	267 0 0.0
CENTRE		284894.485	5823031.687	412.500
T.P	256.440	284843.440	5822622.358	277 6 30.0
END	758.517	284345.222	5822684.487	277 6 30.0

DESIGN CONTROL LINE CORBET STREET

CHAINAGE	EASTING	NORTHING	BEARING	RADIUS
START	0.000	284444.613	5822764.302	97 6 30.0
H.I.P	549.950	284990.336	5822696.248	97 6 30.0
T.P	549.950	284990.336	5822696.248	97 6 30.0
CENTRE		284991.517	5822705.724	-9.550
T.P	564.951	285000.994	5822704.543	7 6 30.0
H.I.P	564.951	285000.994	5822704.543	7 6 30.0
H.I.P	631.851	285009.273	5822770.928	7 6 30.0
T.P	631.851	285009.273	5822770.928	7 6 30.0
CENTRE		284999.796	5822772.110	-9.550
T.P	646.852	285000.978	5822781.587	277 6 30.0
H.I.P	646.852	285000.978	5822781.587	277 6 30.0
H.I.P	1064.341	284586.698	5822833.249	277 6 30.0
T.P	1064.341	284586.698	5822833.249	277 6 30.0
CENTRE		284588.158	5822844.959	11.800
T.P	1069.351	284582.004	5822834.891	301 26 13.8
H.I.P	1069.351	284582.004	5822834.891	301 26 13.8
END	1079.245	284573.562	5822840.051	301 26 13.8

DESIGN CONTROL LINE BUNYIP STREET

CHAINAGE	EASTING	NORTHING	BEARING	RADIUS
START	0.000	284615.876	5822650.736	187 6 29.9
END	169.243	284594.933	5822482.794	187 6 29.9



ROAD CLASSIFICATION
 -CORBET STREET = ACCESS PLACE
 -BUNYIP STREET = ACCESS PLACE
 -TOOLERN WATERS DRIVE = CONNECTOR STREET

EXISTING CUT OFF DRAIN TO BE CLEANED OUT OF ALL WET AND DELETERIOUS MATERIAL TO A FIRM BASE. AREA TO BE FILLED WITH AN APPROVED MATERIAL

WARNING!
 THE LOCATION OF EXISTING SERVICES SHOWN ON THESE PLANS MUST BE PROVEN ON SITE, THE APPROPRIATE AUTHORITY MUST BE CONTACTED AND THE SERVICES LOCATED PRIOR TO COMMENCEMENT OF ANY WORKS.

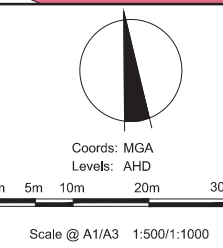
STREET NAME	GAS		ND WATER		WATER		TELECOM		ELECTRICITY	
	SIDE	OFFSET	SIDE	OFFSET	SIDE	OFFSET	SIDE	OFFSET	SIDE	OFFSET
TOOLERN WATERS DRIVE	S	2.00	S	2.50	S	3.35	N	1.775	N	2.60
CORBET STREET	N	2.05	N	2.55	N	3.05	S	2.10	S	2.60
BUNYIP STREET	E	2.05	E	2.55	E	3.05	W	2.10	W	2.60

REV	AMENDMENTS	DATE	APPD.
1	VEHICLE CROSSINGS AMENDED	15/02/13	TL
0	CONSTRUCTION ISSUE	06/02/13	TL

Drawn HT Date 11/03/11
 Designed SK Date 29/09/11
 AN 26944
 Verified RM Date 29/09/11
 AN 6141
 Audited TO Date 05/02/13
 AN 911465
 Approved TL Date 05/02/13
 AN 881477
 Written dimensions to take precedence over scale.
 Contractor shall check and verify all dimensions on site.
 Discrepancies to be brought to the attention of the Superintendent.

LEGEND

- Ex W - EXISTING WATER MAIN
- Ex RW - EXISTING RECYCLE WATER MAIN
- Ex G - EXISTING GAS MAIN
- Ex E - EXISTING ELECTRICAL CABLE
- Ex S - EXISTING SEWER MAIN & MANHOLE
- Ex T - EXISTING TELECOMM. CABLE AND PIT
- Ex D - EXISTING STORMWATER DRAIN & PIT
- 528.06 - EXISTING SURFACE LEVEL
- FS21.650 - FINISHED SURFACE LEVEL
- TBS21.650 - FINISHED BATTER LEVEL
- S - SEWER MAIN AND MANHOLE
- W - WATER
- T - TELECOMMUNICATIONS
- E - ELECTRICITY
- G - GAS
- RW - RECYCLE WATER
- GC - GAS CONDUIT
- RWC - RECYCLE WATER CONDUIT
- WC - WATER CONDUIT
- PM - PERMANENT SURVEY MARK
- TM - TEMPORARY BENCH MARK
- FD - FUTURE STORMWATER DRAIN & PIT
- FS - FUTURE SEWER
- RW - RECYCLE WATER
- W - WATER
- T - TELECOMMUNICATIONS
- E - ELECTRICITY
- G - GAS
- RW - RECYCLE WATER
- LOT GRADING
- ASPHALT PAVEMENT
- CONC FOOTPATH / DRIVEWAY Hor 1:500 0m



FREEMAN DEVELOPMENTS P/L
TOOLERN WATERS - STAGE 4
139-247 REES ROAD, MELTON
DETAIL PLAN

Drawing No. 10693.ADP01 Rev 1
 Sheet No. 03 CONSTRUCTION ISSUE

DCE
 dalton consulting engineers

255 Whitehorse Road
 PO Box 348
 Balwyn Victoria 3103
 Australia

T 61 3 8888 8888
 F 61 3 8888 8880
 E info@dceprofile.com
 W www.dceprofile.com